



MEL / Vangelder and all other Winch Parts

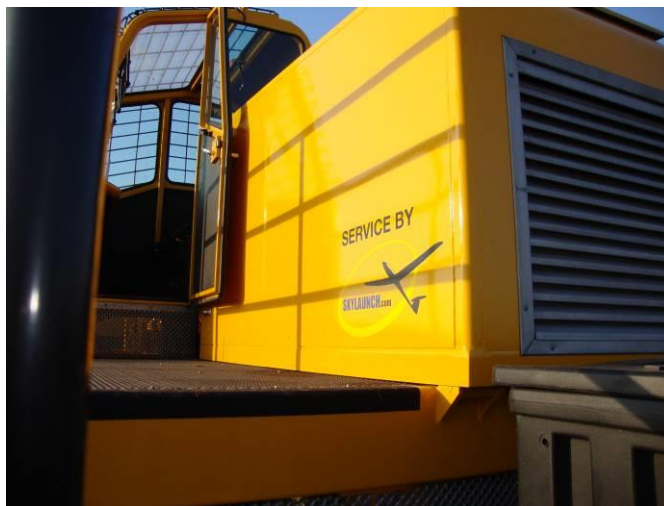
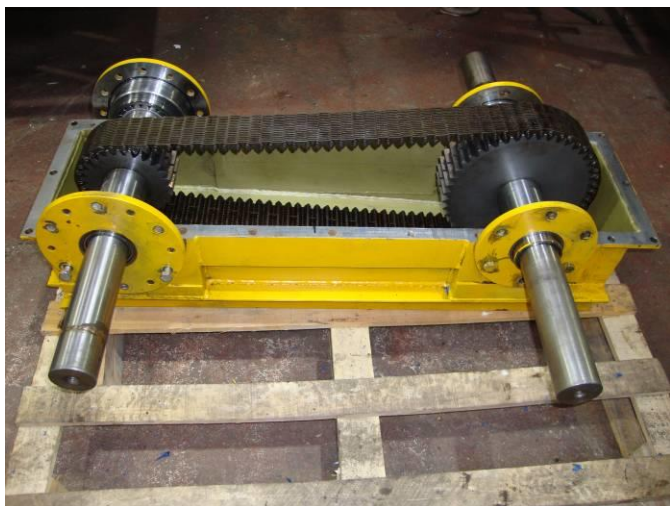
We have some interesting new products for winch launching Gliding Clubs, and wanted to offer our services and support for the New Year.

Skylaunch provided parts, spares and on-site support for all the MEL / VanGelder winches for the British Air Cadets before they upgraded to a fleet of new Skylaunch winches, and we still have a contract for MEL / VanGelder winch support and full winch refurbishments with another European Military organisation.

Now the British MEL / VanGelder winches have been released for sale to Civilian Gliding Clubs, please don't forget Skylaunch offer support and assistance with all aspects of operation and maintenance of these winches and all other types of Glider winch.



Above and overleaf are a few example pictures of some of the MEL / VanGelder parts manufactured, stocked and supplied by Skylaunch:



Service and spare parts, Consumables, Accessories etc:

- ▶ Full Dyneema conversion components and instructions,
 - ▶ Adapters to upgrade to Skylaunch Pulley Roller Heads,
 - ▶ Cable Pulleys, Rollers, Bearings, etc.
 - ▶ Guillotine Blades and other parts,
 - ▶ Drum repairs or complete new Drums,
 - ▶ Chain Drive and driveline components,
 - ▶ Brake and pay-on (level wind) parts,
 - ▶ Drive Belts, Pulleys,
 - ▶ Filters, Lubricants, etc,
 - ▶ Cables, Parachutes and Accessories,
- All other winch parts also available – please enquire.



Please contact us for no-obligation advice or quotations on all subjects relating to Glider winching

E-mail: mike.groves@skylaunch.com

WWW.SKYLAUNCH.COM



**Skylaunch Ltd, E11-E14 Wem Industrial Estate, Wem,
Shropshire, SY4 5SD, ENGLAND**

Tel: +44 (0) 1939 235845 Fax: +44 (0) 1939 234059

